



Source:
Top: cityofbath.com
Left: Portland Press Herald
Right: bikewalkbath.org

Resilient Bath Initiative

**The Future of
Transportation in Bath:
Accessible, Flexible, Sustainable,
Cost-Effective & Healthy**



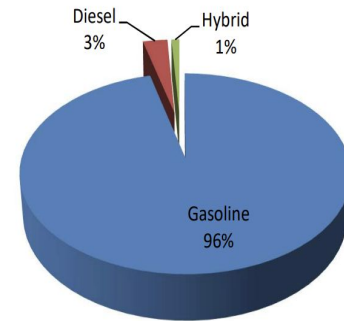
*How the Bath community can embrace the future of
transportation right here in the City of Ships*

Bath Climate Action Commission

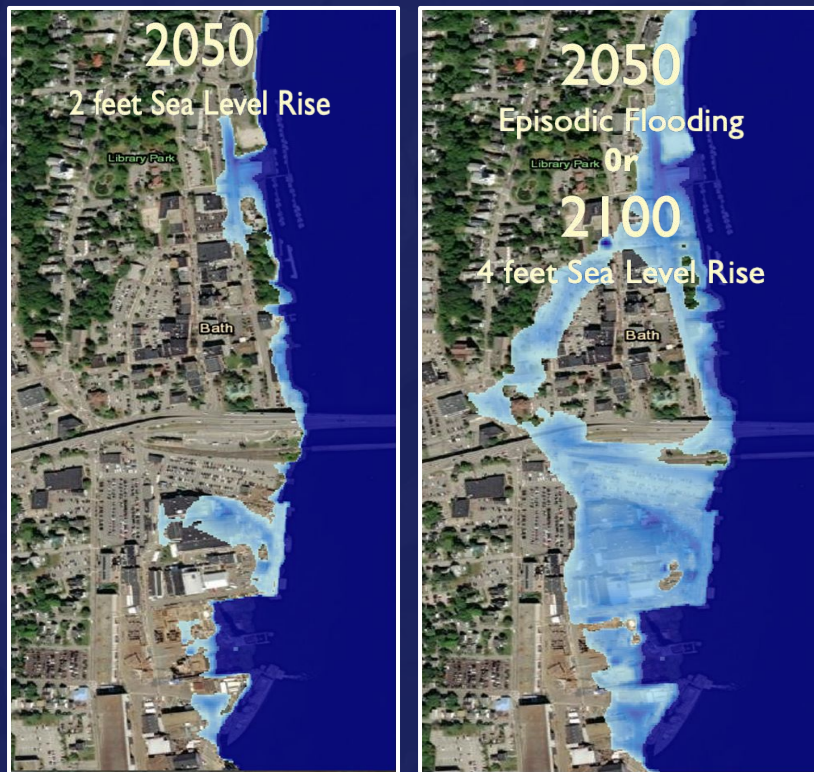
WHY IT MATTERS

In 2018, transportation within Bath accounted for **19 percent** of total City emissions. Of that, **96 percent** came from gasoline-powered cars. These emissions contribute to climate change and related impacts will be felt in Bath via increased flooding, stronger storm events, warmer summers, and more drought conditions.

2018 Community Vehicle Emissions by Fuel



Source: [2018 Bath Climate Action Plan](#)



<https://coast.noaa.gov/slr/> accessed 2 July 2021.

These are renderings of potential **flooding** and increased **storm event** impacts in Bath. The image on the left is a level of flooding that we already see from occasional **high tides** and **storm surge** events. By 2050, those occasional events will have become our **normal** everyday high tide. When one of those same high tide events happens on top of that amount of sea level rise, it will look like the image on the right. In *Maine Won't Wait*, the state's climate council recommends committing to manage **1.5 feet of sea-level rise** by 2050 and **3.9 feet** by 2100.

A **transition** is taking place throughout the world, country, and state towards developing more accessible and sustainable transportation options to create more livable places and combat climate change. The **City of Bath** wants to be a **leader** as this transition takes place in Maine, helping our community become a **healthier**, more **equitable** and **resilient** place to call home.



Alternative Transportation

There is a concerted effort from the City and community to ensure the future of transportation in Bath is safe, equitable, and accessible for all while reducing harmful emissions. Many different city departments and committees are working hard to make sure our streets are more walk-, bike-, and roll-friendly as well as improving public transit and EV charging infrastructure.

While that work is being done, there are many ways community members can engage in alternative transportation options right here in Bath, right now!

Bath Climate Action Commission

What can I do?

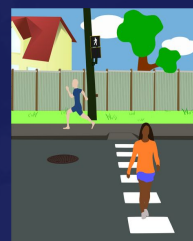
Small steps add up to large impacts.



Get an EV



Advocate for livable & walkable cities

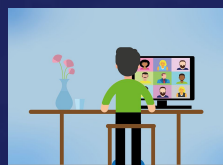


Take public transit



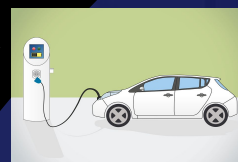
Demand renewable energy

Telework

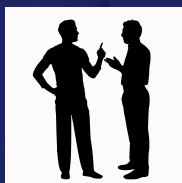


Fly less

Consider a hybrid



Talk with family and friends



Demand EV infrastructure

Talk to politicians



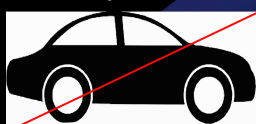
Walk more



Rideshare



Bike more



Drive less



Source:
@bathbikeped
via Instagram

Walk, Bike, or Roll!

Do you live a 5-10 minute drive away from where you're headed? If so, odds are walking, biking, using a wheelchair or other mobility aids wouldn't take much longer! Reducing your Vehicle Miles Traveled (VMT) is an important step in making our community healthier and protecting our climate.

Walk & Roll Friendly Streets

Learn more from [Bike Walk Bath](#) about why Bath is an ideal city for walking or rolling to your destination.



FYI: What are Complete Streets?

The U.S. Department of Transportation defines Complete Streets as "streets designed and operated to enable safe use and support mobility for all users. Those include people of all ages and abilities, regardless of whether they are travelling as drivers, pedestrians, bicyclists, or public transportation riders." Learn more about what having [Complete Streets](#) means for the City of Bath and all its residents.



Bath Bike Racks

There are currently [24 locations](#) in Bath where you can find bike racks. Going to Brackett's? Heading to school? Stopping by Waterfront Park? Hop on your bike and park it safely!

Check out the [Bath Bicycle and Pedestrian Committee's website](#) for more information, resources, and community bike rides!

The [Bicycle Coalition of Maine](#) also has many helpful resources.



Want to know how to make walking and biking more convenient and safe? Check out this [resource](#) from GO MAINE for tips on walking or biking to your destination.

Bath Climate Action Commission



Source: Portland Press Herald

Public Transportation

Although we live in a rural state, there are still public transit options available!

The City

There are **two** very affordable and convenient public transportation options right here in the City of Bath: the city bus and trolley. So if you're running errands, going to the doctors, or commuting to and from work or school, check out how to use both services.

City bus

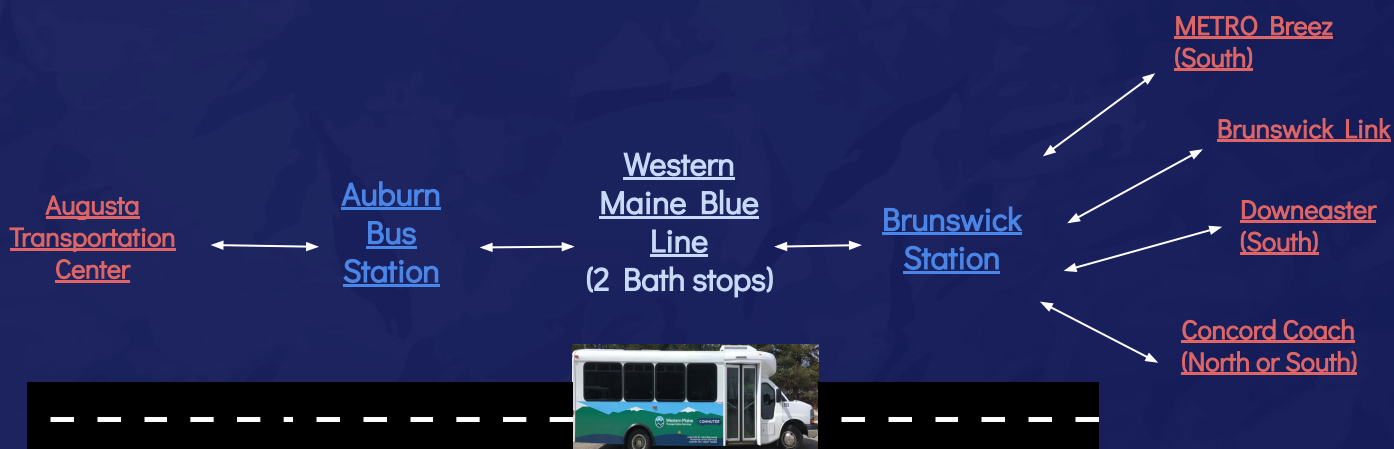


Charlie the Trolley



Surrounding areas

Bath is well located in the midcoast making it easier to reach central or southern Maine via public transportation. The Western Maine Blue Line connects Bath with Auburn, Lewiston, Lisbon, Topsham, and Brunswick. Below are a few options for getting around!





Carpool Programs



Check out the
impact from
green commutes!



Look out for this sign
on Maine roads!



GO MAINE is a statewide commuter program that provides resources to arrange **carpools** and **vanpools** to and from work. Members are eligible for the **rewards program** when they log these alternate commutes as well as when they log commutes by walking, biking, taking the bus, or teleworking. Better yet- all their services are **free!**



A program of the Maine Turnpike Authority and the MaineDOT that provides ride matching for carpools and rewards people for taking green commutes. They serve the entire state, and the services are free.



Current number
10/1/21-4/28/22

Goal number

Percent change

Total members	9,590	10,620	10.7
New members	230	500	117.4
VM ^T * reduction	604,889	2,925,000	383.6
Trip reduction	31,298	129,000	312
CO ₂ reduction (tons)	265	1,175	343.4

*Vehicle Miles Traveled

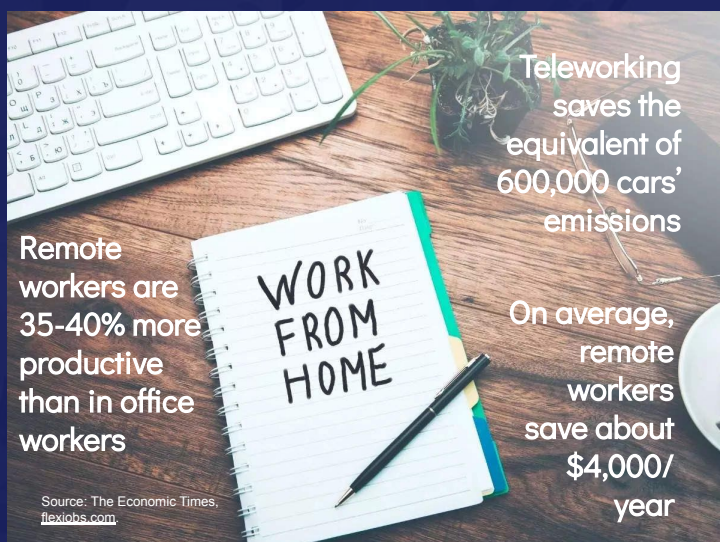
Source: gomaine.org



Source:
marketplace.org

Teleworking

If you have a job where it's possible to work remotely or hybrid, talk with your boss or company about teleworking as an option for employees. Not only do teleworking policies give employees flexibility, they reduce the amount of driving time and emissions associated with commuting and help employees save money.



Remote workers are 35-40% more productive than in office workers

Source: The Economic Times, flexjobs.com

Teleworking saves the equivalent of 600,000 cars' emissions

On average, remote workers save about \$4,000/year

Here are some tips from **GO MAINE** about teleworking, resources for employers, and the benefits you can enjoy through their program.

GO MAINE

Bath Climate Action Commission



Transition to Electric Vehicles

Electric vehicles, commonly referred to as **EVs**, offer a cleaner and quieter driving experience with lower operating costs, more energy independence, and less emissions. If you feel it's time to get a new car, consider alternatives to the traditional gas guzzlers. If going from gas to fully electric is too much of a jump at the start, a good middle ground may be a **Plug-In Hybrid Electric Vehicle** (PHEV). PHEVs run partly on an electric battery and partly on a gas motor. If you're ready to go fully electric, a **Battery Electric Vehicle** (BEV) is what you're looking for. BEVs run fully on an electric battery. New EV models continue to be released and **used** options are becoming increasingly available for both BEVs and PHEVs- look no further than [Paris Autobarn!](#)



*Efficiency
Maine:
Understand EVs*



*EPA: How
Plug-In Vehicles
Work*



A lot goes into buying a new car, even more so when there are new developments in technology. Check out these resources to learn more about EV technology, battery ranges, benefits of EVs, types of EVs, where to buy one in Maine, FAQs, and much more.



[**What is an EV and how does it work?**](#)

[**News and Reviews on EVs**](#)

[**U.S. Department of Energy EV Handbook**](#)

[**Consumer Reports EV Checklist**](#)

[**EPA Green Vehicle Guide**](#)

Bath Climate Action Commission

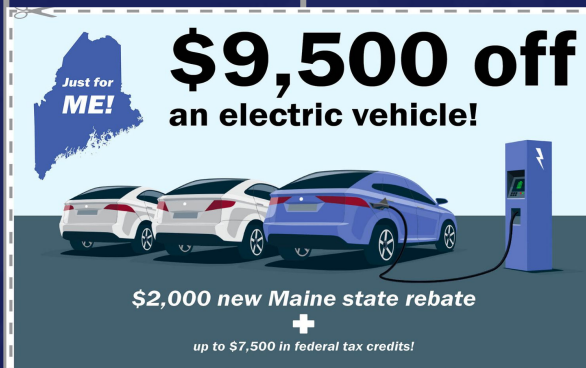


Source:
nrcm.org

EV Financial Incentives

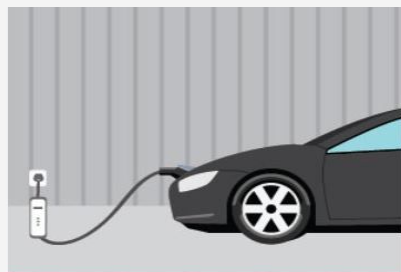
There are financial incentives from the federal government, local initiatives from Efficiency Maine, and select Maine car dealers that when added together can offer major cost savings for people looking into both BEV and PHEV options. Check out the resources below to decide what your best option may be.

<u>Federal Tax Credit</u>	<u>Efficiency ME Low Income Rebates</u>	<u>Efficiency ME Standard Rebates</u>	<u>Maine Car Dealer Instant Rebate</u>
<p>Up to \$7,500 depending on the car make and model</p> <p><small>*Note: the tax credit phases out when manufacturers have sold 200,000 of a particular model.</small></p>	<p>Up to \$5,500, depending on if you buy a new or used EV</p>	<p>\$2,000 for BEVs and \$1,000 for PHEVs</p>	<p>Some dealerships in Maine offer their own instant rebates in addition to federal and Efficiency Maine incentives. Find the form here.</p>



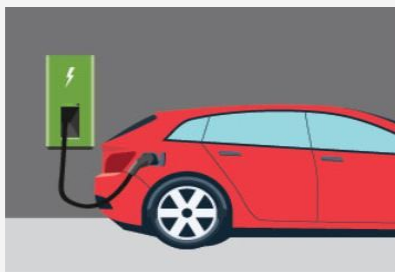
Source: Natural Resources Council of Maine

Level 1



Source: pluginnc.com

Level 2



DC Fast Charge



EV Charging - Explained

There are three different levels of EV chargers. Each level has its own pros, cons and fit for any given situation. Below are details that can help you navigate EV charging at home and on the road.

Level 1:

- **Voltage:** 120 (regular home outlet)
- **Charge rate:** full charge in 11-20 hours
- **Good to know:**
 - Slowest of the charger levels
 - When you buy an EV, a level 1 charging cord comes with your car



Level 2:

- **Voltage:** 240 (outlet for appliances like washers & dryers)
- **Charge rate:** full charge in 3-8 hours
- **Good to know:**
 - Purchasing an at-home level 2 costs on average \$2,000
 - Installation may require rewiring your garage by an electrician, which can add to the cost



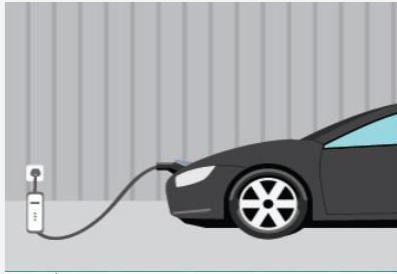
Level 3:

- **Voltage:** 400-900
- **Charge rate:** full charge in ~30 minutes
- **Good to know:**
 - Predominantly used for public charging stations due to installation costs and high electricity voltage
 - Typically referred to as DC chargers

FMI regarding EV charging, check out these resources:

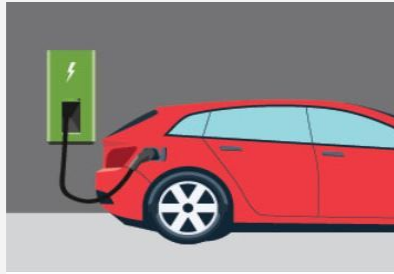
- [Home Charging Guide](#)
- [EV Connect](#)
- [Kelley Blue Book](#)
- [Forbes](#)

Level 1



Source: pluginncc.com

Level 2



DC Fast Charge

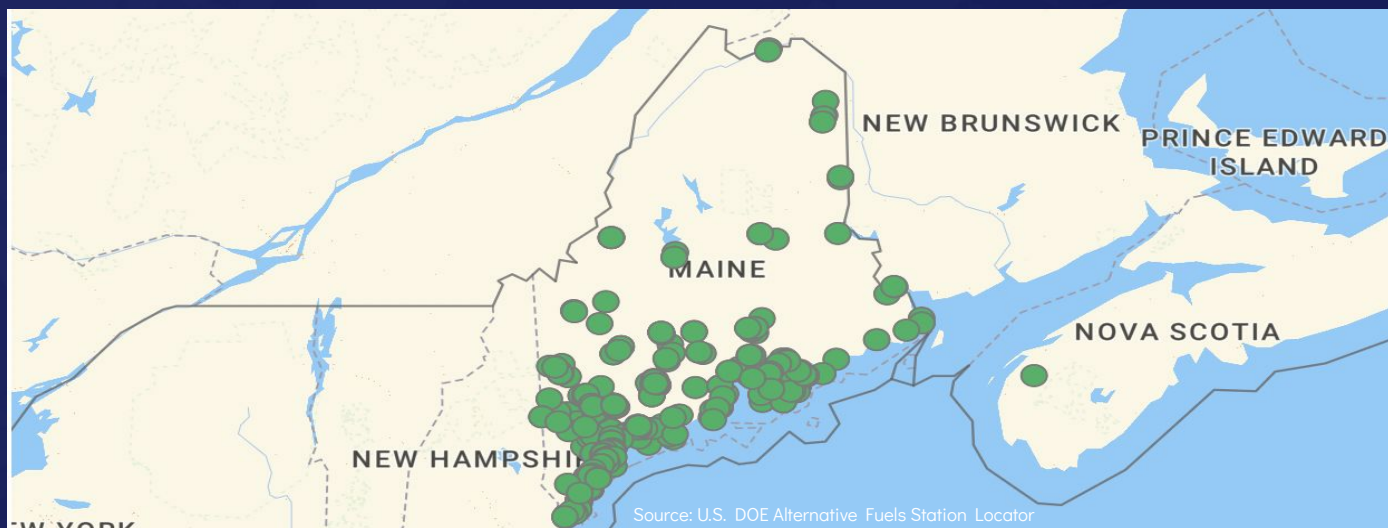


EV Charging - Explained



Level 2 charger installed in an 1896 Bath home.



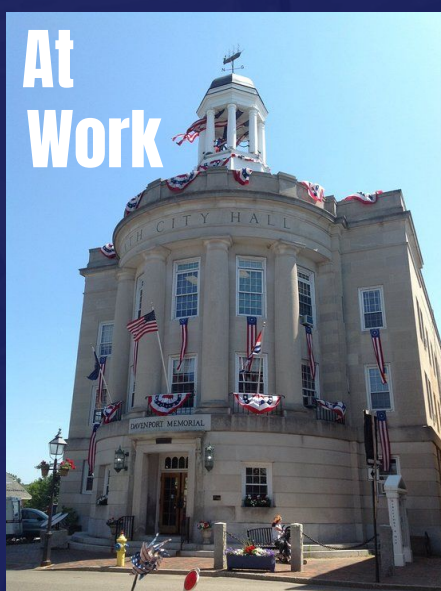


EV Charging Infrastructure

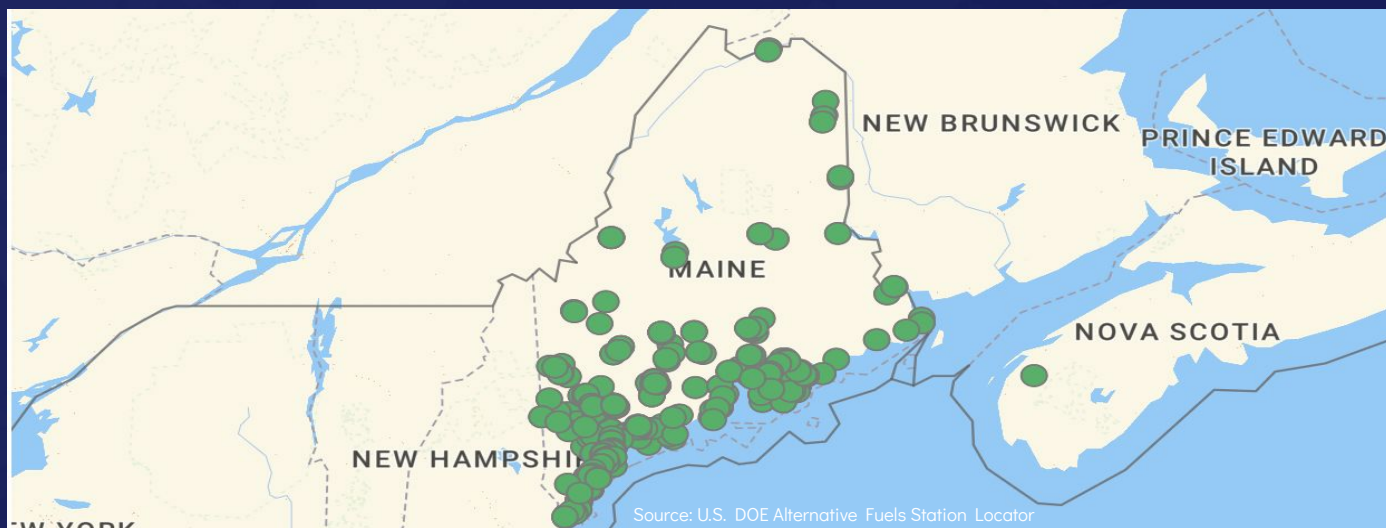


Learn more about installing an EV charger at home from [Efficiency Maine](#). Check out more helpful tips and how-tos with their [video series](#).

Want an alternative to installing a charger? Use the **Level 1** cord that comes with your EV and plug it into the closest standard outlet.



[Efficiency Maine](#) also provides resources for businesses looking to install EV charging stations for their employees and customers. If your work doesn't have one, share these resources with your employer.



EV Charging Infrastructure



The City of Bath has one set of EV charging stations at **15 Commercial St.** right by the train station/visitor center, with plans for more in the works. Check out other local charging stations, [here](#).



The [Alternative Fueling Station Locator](#) shows you where you can find charging stations throughout the state (or country). It gives specific details for each station including: address, level of charger, number of chargers, and type of connector. The Alternative Fueling Station app is available on [iPhone](#) and [Android](#).



Source: Maine Electric Boat Co.

*City of *Electric* Ships*

If you're looking for alternative versions of water transportation than diesel powered vessels, more options are becoming available here in Maine!

Want to rent a boat for the day or in the market to buy for a cruise along the Kennebec? Maine Electric Boat Co. in Biddeford offers fully electric boats for rent or to buy. They also offer daily excursions aboard their electric vessels!



A hybrid-electric ferry is being constructed for Casco Bay Lines, expected to be operational by 2024.

So if you're heading across the bay to Peaks Island, try a ride on the new ferry to get there!



Get Involved



Engage in Bath City Council, Climate Action Commission, Bicycle and Pedestrian Committee, and/or Transportation Committee meetings and events to express your concerns and ideas for a more walkable/bikeable/rollable city, public transit options, EV charging infrastructure, EV municipal vehicles, EV school buses, and more. Find a list of committees, [here](#) and city councilors, [here](#).



Talk with friends and family about these topics to spread the word and garner more support



Share on social media the positive work you and your community are doing towards a safer, healthier, and climate-friendly city!

Additional Resources

- For more information on alternative, “green” transportation, visit the [Maine Won't Wait](#) website.
- [EV road trip from LA to Maine](#)- Check out this great blog post detailing one Mainer's experience driving electric across the country.
- **Electric Bikes** are also becoming a very popular option for those wishing to go electric, but prefer to start out with something smaller. Click [here](#) to check out the e-bike market.
- For travel outside the city, check out the University of Wisconsin's [Traveling Sustainably Guide](#) and Maine Community Solar's [Eco-Friendly Travel Tips](#)

For more information:

Visit our website
cityofbath.com/ClimateActionCommission
for updates on community events
and resources!

